

## Passenger/Goods Hoist Counter weight failure

A significant learning has taken place on one of our projects involving a falling counter weight from a pull down gate of a hoist after the cable holding it in place has snapped

The goods/passenger hoist was travelling down from level 19 to the ground floor when a bang was heard as it passed level 15, the operator of the adjacent hoist observed the 25kg door counterweight detach from the front right-hand side of the hoist and fall to the floor.

The weight struck the latch bar above the right side hoist (Which was at ground floor level) before hitting the ground meters away from a Morgan Sindall Site Manager.

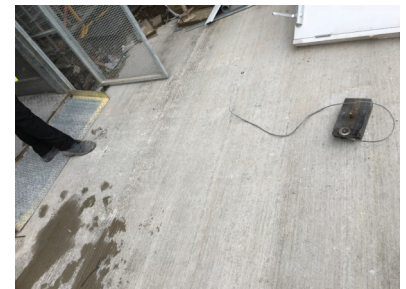
This is the second incident to occur with this hoist involving the door counter weight becoming detached.

Initial investigation after the incident appears to show damage to the cable that supports the weight in a number of areas that have not been picked up during Daily/weekly inspections

**Hoist Manufacturer: SAE climber**

**Hoist Model: E20 MK2 (2018)**

**If this type of Hoist is being used on any of our projects they need taking out of action immediately until further notice and confirmation given to your SHE advisor that this has taken place**



This advice should be used, where the above is applicable, and the information discussed with your team highlighting the following points:

- All SAE climber hoists to be taken out of action
- Inspections of counter weight cables to be completed on all hoists in use
- Counter weight cable inspections to be included on the daily/weekly inspection sheets
- Confirm back to your SHE Advisor once hoists are taken out of action

SHEQ Alert date:	mm/yyyy	Display until:	Mm/dd/yyyy	
Distribution:	Morgan Sindall x	Supply Chain x	Plant Hire Desk x	Morgan Sindall Group x
Communication:	Toolbox talks / briefings x	Noticeboards x	SHEQ update x	

Everyone has the right to be

**100% Safe**