



**Mandatory – Must be applied at all locations**

## Air Quality Management

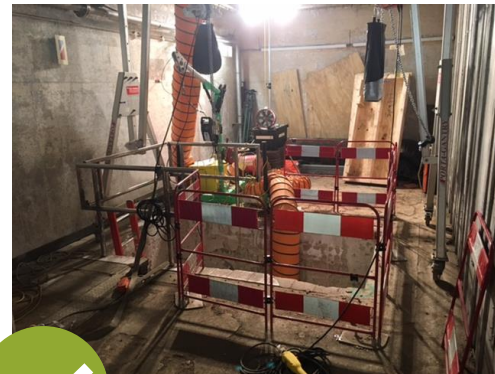
Construction site tasks can emit hazardous substances into the air which may affect the health of employees if inhaled. These can be in the form of gases, vapours, fumes, mists and dusts.

All hazardous substances must be controlled using the hierarchy of control of Eliminate, Reduce, Isolate, Control.

Various measures could be used to manage air quality where fumes, dusts, vapours are present and cannot be eliminated or reduced to safe levels, and include (clockwise from top left):

- Forced air ventilation
- Fume extraction for welding kits
- Dust extraction cubes
- Use of diesel exhaust filters where plant is used internally.

RPE is the last resort and must not be used to negate the need for engineering controls.



*Pat Boyle*

**Pat Boyle**  
Managing Director  
Construction

REFERENCE	REVISION	DATE	OWNER
SHE-VIS-034	Rev 2	May 2022	M. Hall

**MORGAN  
SINDALL**  
CONSTRUCTION