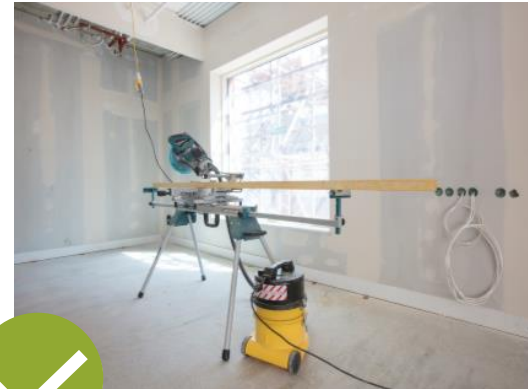


Mandatory – Must be applied at all locations

Workstation Local Exhaust Ventilation (LEV)

All dust producing cutting tools must be used with Local Extraction Ventilation (LEV), and these must be:

- Minimum of 'M' or 'H' Class extraction.
- Class type must be displayed on equipment.
- LEV Connection hoses must be made as per manufacturer's instructions and never make-shift i.e. using duct tape.
- Respiratory Protective Equipment (minimum of FFP3) self checking and face fitted worn in addition to the operational LEV
- Domestic type vacuums must not be used for LEV.
- For typical dust hazards a suitable COSHH assessment must be carried out to determine the level of respiratory risk in order to prevent occupational diseases
- All LEV must be thoroughly examined every 14 months, and certification that this has been undertaken provided to Morgan Sindall



Pat Boyle

Pat Boyle
Managing Director
Construction

REFERENCE	REVISION	DATE	OWNER
SHE-VIS-030	Rev 2	May 2022	M. Hall

**MORGAN
SINDALL**
CONSTRUCTION